

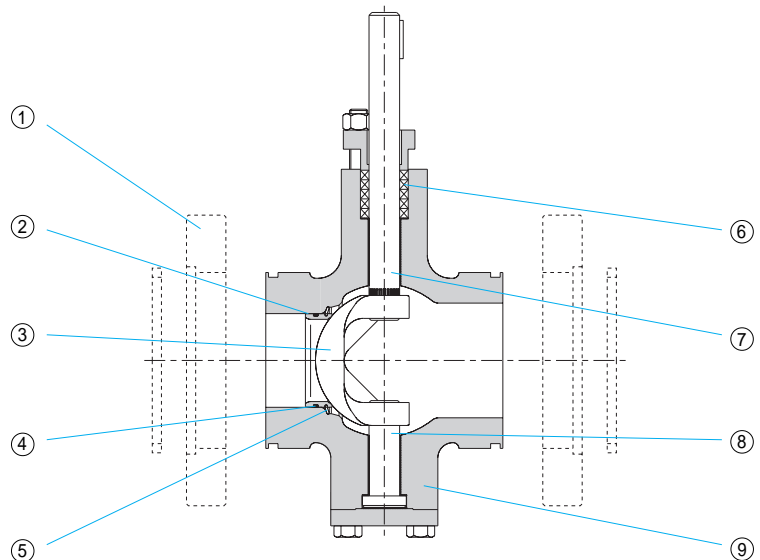
VT SERIES SEGMENT BALL VALVE

HITER



Main Parts Identification

- ① Flange (optional)
- ② Seat
- ③ Ball Segment
- ④ Seat Back Seal
- ⑤ Seat Retaining Spring
- ⑥ Packing
- ⑦ Shaft
- ⑧ Shaft Pin
- ⑨ Body



Features

Characteristic

Segment ball valve with double bearings and self adjusting seat.

Pressure-Temperature Ratings and Sizes

ANSI B16.34 class 150 or 300, sizes from 1 to 10 in.

End Connections

Flangeless (wafer type) or raised face flange according to ANSI B16.5. Other flange standards can be supplied upon request.

Body Material

ASTM A 216 Gr. WCB carbon steel, ASTM A 351 Gr. CF8 or Gr. CF8M stainless steel. Other materials are available on application.

Trim Materials

Hard chrome plated stainless steel segment ball. Stellite hard faced stainless steel seat. Other combinations or materials are available on application.

Packing Material

Braided PTFE or asbestos⁽¹⁾ with PTFE, for general purpose use. Other materials are available on application.

(1) Used only in case of no restrictions to asbestos.

Control Characteristic and Cv

Equal percentage. See table.

Shutoff Classifications (ANSI/FCI 70-2)

Better than class IV (class V optional).

Face to Face Dimension

According ANSI/ISA S75.04.

Special Constructions

Noise and cavitation abatement trims.

Flow coefficient - Cv

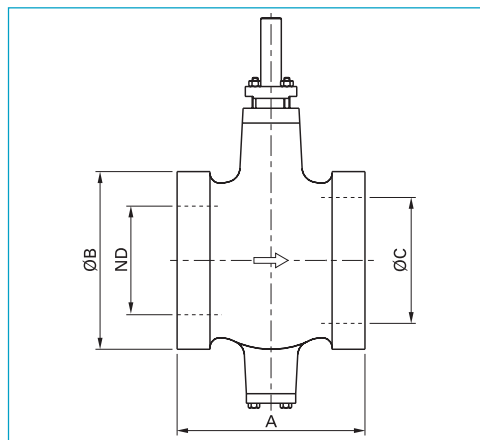
BODY SIZE (in.)	PERCENT OF OPENING											
	5	10	20	30	40	50	60	70	80	90	95	100
1 (reduced)	0.14	0.23	0.42	0.61	0.83	1.11	1.46	1.94	2.60	3.57	4.09	4.50
1 (reduced)	0.25	0.46	0.85	1.00	2.00	2.85	3.86	5.35	7.28	10.2	12.0	14.0
1	0.33	0.54	0.96	1.86	3.20	4.92	7.16	9.69	12.8	17.7	21.4	27.0
1.5	0.53	1.16	2.75	5.39	9.23	14.3	20.7	28.1	37.0	51.1	61.8	78.0
2	0.84	1.81	4.32	8.40	14.4	22.2	32.3	43.8	57.9	79.6	96.0	120
3	1.97	4.22	10.1	19.7	33.8	52.1	75.7	103	136	186	226	285
4	3.16	6.77	16.4	31.6	54.1	83.4	121	165	217	299	362	455
6	5.83	12.5	30.0	58.3	100	154	224	303	402	552	669	840
8	9.47	20.3	48.7	94.7	162	250	363	494	651	896	1088	1350
10	14.9	32.0	76.6	149	255	393	572	776	1029	1411	1706	2120

Actuators

The **VT Series** segment ball valve is normally operated by diaphragm/spring pneumatic actuators (DCL series) or by double action or spring return pneumatic piston actuators (AP series).

Can also be supplied with electric actuator. Detailed information about actuators are given in specific bulletins.

Dimensions



VALVE SIZE (in.) ND	DIMENSIONS (mm)		
	A	ØB	ØC
1	102	57	38
1.5	114	73	48
2	124	92	60
3	165	127	89
4	194	157	110
6	229	216	160
8	243	270	205
10	297	324	255

HITER

HITER IND. E COM. CONTR. TERMO-HIDR. LTDA.
 Rua Capitão Francisco Teixeira Nogueira, 233
 CEP 05037-030 - Água Branca - São Paulo - Brasil
 Phone.: +55 11 3611.0788
 Fax: +55 11 3611.0921/3611.1711
 e-mail: vendas@hiter.com.br - www.hiter.com.br

Representative

Bulletin 1170 / Rev. July 2000