



SE SERIES BALL VALVE



Features

Characteristic

Ball valve with split body construction and side entry ball.

Available Types

SE-F

Floating ball.

SE-T

Trunnion mounted, with sliding seats.
Double block and bleed.

Pressure-Temperature Ratings and Sizes

SE-F - ANSI B16.34 classes 150 or 300, sizes from 0.75 to 4 in.

SE-T - ANSI B16.34 classes 150 or 300 for sizes 6 to 24 in., class 600 for sizes 2 to 24in.

End Connections

FR - Raised Face

FF - Flat Face

RJT - Ring type joint

Other flange facings can be supplied upon request.

Body Material

ASTM A 216 Gr. WCB carbon steel,
ASTM A 351 Gr. CF8 stainless steel or
ASTM A 351 Gr. CF8M stainless steel.
Other materials are available on application.

Ball and Seat Material

Chrome plated carbon steel ball (size 6 in. and up) or stainless steel ball. Carbon reinforced PTFE or High Performance Thermoplastic seat for tight shutoff and temperatures up to 200°C (392°F). Fire safe construction with PTFE primary seat and stainless steel secondary seat.

Hard chrome plated stainless steel ball and Stellite coated stainless steel seat for high temperature applications or for applications with fluids containing suspension solids. Other combinations or materials are available on application.

Packing Material

Braided PTFE or asbestos⁽¹⁾ with PTFE, for general purpose use. Graphite, for high temperature or fire safe construction. Other materials are available on application.

(1) Used only in case of no restrictions to asbestos.

Flow Characteristic

Equal percentage (inherent).

Flow Coefficient - Cv

See Table.

Shutoff Classifications

According to API specification 6D or MSS-SP-72 standard.

Optional: ANSI/FCI 70-2 Class VI for soft seats, Class IV or V for metal seats.

Face to Face Dimension

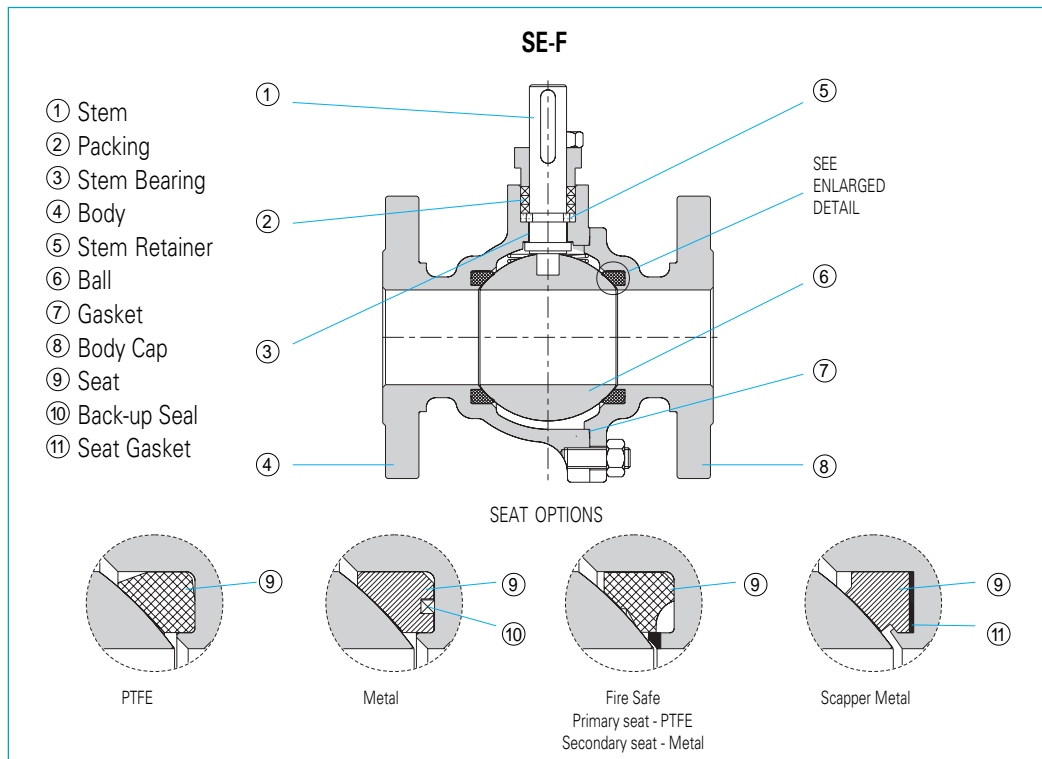
According ANSI B16.10 (long type) and API 6D.

Special Constructions

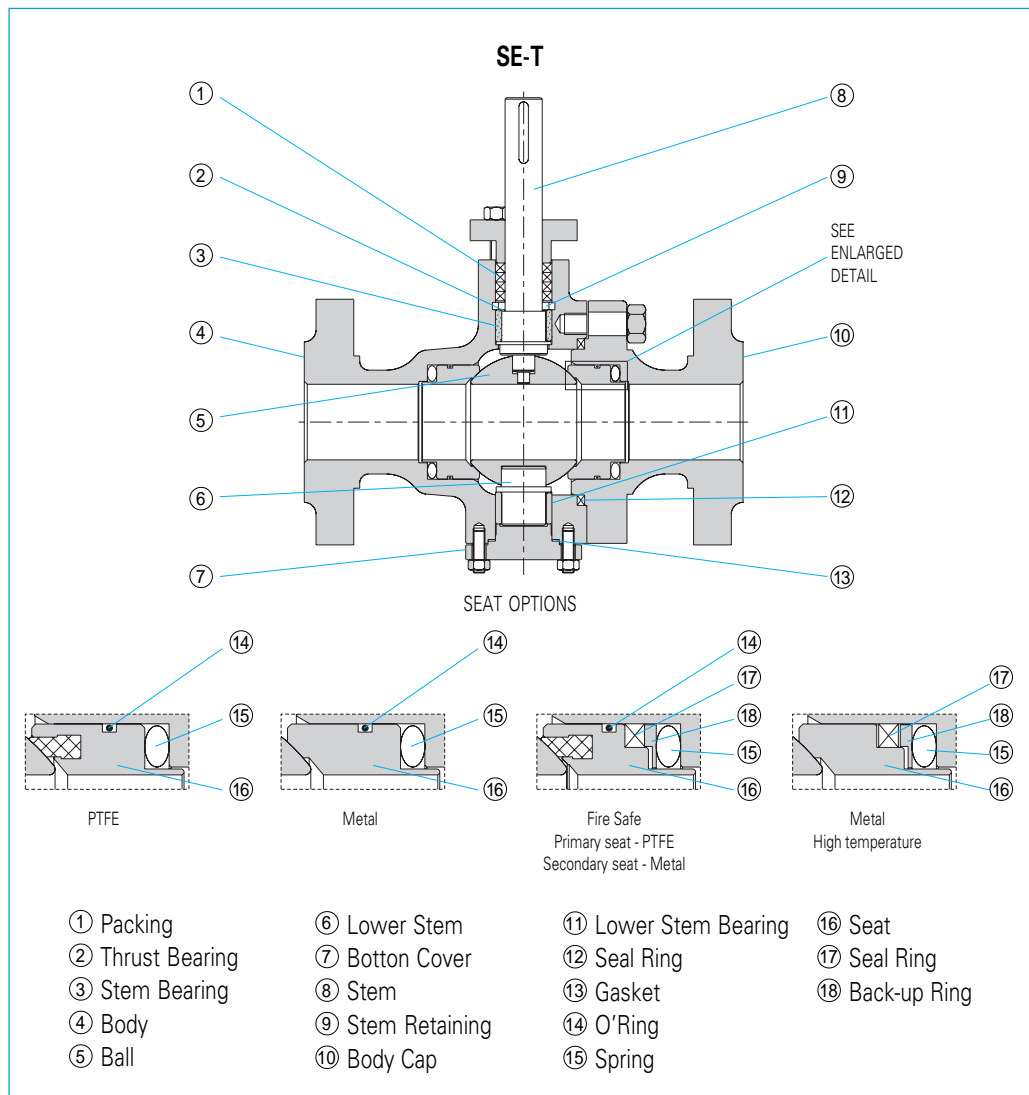
Fire Safe, scraping metal seat for descaling the ball surface, low-noise and anti-cavitation ball, reduced bore, steam jacketed body, extended actuator bracket for high temperature applications and extended bonnet for low temperature applications.

Sealing injection and by-pass options in SE-T type.

Main parts identification



Main parts identification



Flow coefficient - Cv

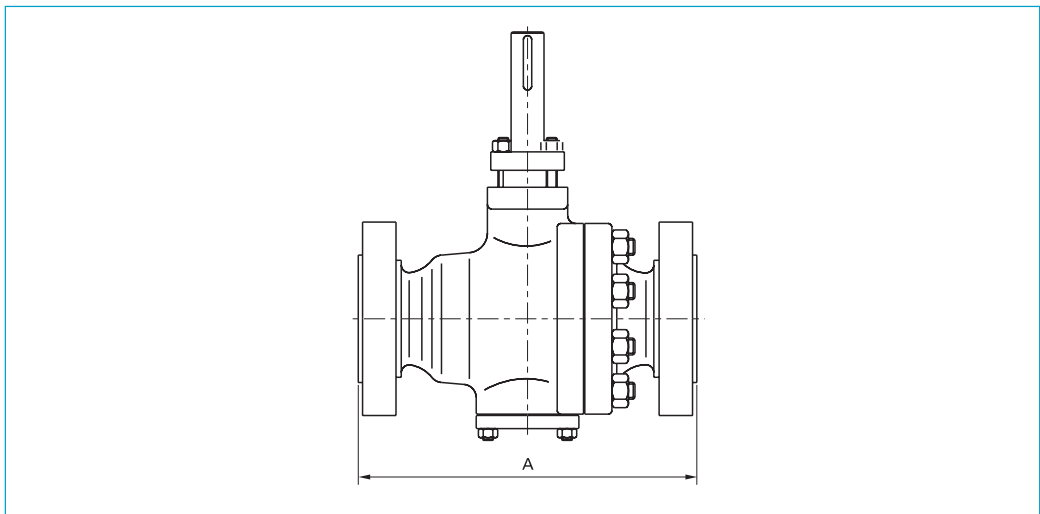
BODY SIZE (in)	VALVE OPENING ANGLE											
	15°	20°	30°	40°	50°	60°	65°	70°	75°	80°	85°	90°
.75	-	-	0.8	1.8	3.6	6.1	8.1	11	14	21	36	57
1	-	-	1.4	3.3	6.4	11	15	19	25	39	64	103
1.5	-	0.9	3.4	8	16	28	39	54	74	108	166	250
2	-	1.3	4.9	12	23	40	58	84	118	183	297	465
3	1.4	5	17	36	65	106	147	211	294	444	719	1100
4	2.5	8.8	30	64	115	191	277	403	563	848	1373	2100
6	12	29	84	169	291	502	728	1060	1480	2190	3520	5300
8	30	65	165	315	531	946	1360	1970	2760	4000	6400	9500
10	55	113	272	513	861	1560	2230	3240	4540	6520	10460	15500
12	77	159	383	720	1210	2220	3230	4680	6560	9420	15110	22400
14	107	216	497	917	1530	2850	4110	5940	8330	11860	19000	28000
16	140	282	647	1200	1990	3750	5430	7850	11000	15680	25110	37000
18	157	327	786	1480	2480	4610	6760	9820	13760	19770	31710	47000
20	256	483	1060	1950	3090	6110	8790	12600	17660	24960	39930	58500
24	373	703	1650	2850	4700	8880	12770	18300	25660	36270	58000	85000

The **SE Series** ball valve is normally operated by double action or spring return pneumatic piston actuators (AP series).

Can also be supplied with electric or hydraulic actuator. Detailed information about actuators are given in specific bulletins.

Actuator

Face-to-face
dimension



BODY SIZE (in.)	A (mm)		
	A NSI CLASS		
	150	300	600
.75	117	152	-
1	127	165	-
1.5	165	190	-
2	178	216	292
3	203	282	356
4	229	305	432
6	394	403	559
8	457	502	660
10	533	568	787
12	610	648	838
14	686	762	889
16	762	838	991
18	864	914	1092
20	914	991	1194
24	1067	1143	1397

Ordering
information

1. Valve size
2. End connection style
3. Body material
4. Trim material
5. Packing material
6. Maximum working condition
7. Normal working condition
8. Minimum working condition
9. Shutoff differential pressure
10. Specific gravity
11. Specific heat ratio
12. Critical pressure
13. Critical temperature
14. Viscosity
15. Inlet and outlet pipe diameter and thickness.

HITER

HITER IND. E COM. CONTR. TERMO-HIDR. LTDA.
Rua Capitão Francisco Teixeira Nogueira, 233
CEP 05037-030 - Água Branca - São Paulo - Brasil
Phone.: +55 11 3611.0788
Fax: +55 11 3611.0921/3611.1711
e-mail: vendas@hiter.com.br - www.hiter.com.br

Representative

Bulletin 1173 / Rev. July 2000