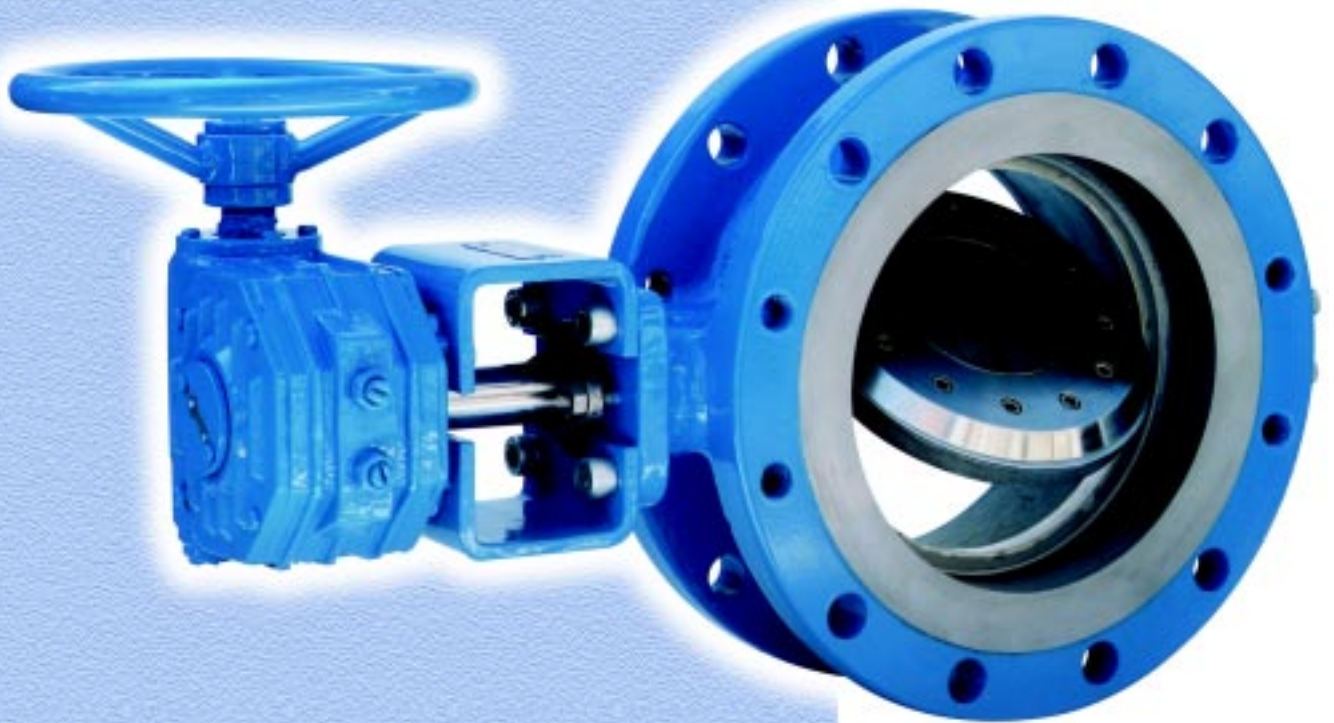




RTC SERIES TRI-ECCENTRIC ROTARY VALVE



Features

Characteristic

Rotary valve with triple offset which eliminates seal-to-seal rubbing during disc travel and torque seated design which provides bi-directional sealing. Suitable for block or control applications.

Available Types

RTC-21

Seat surface integral with the body and metal-graphite laminated sealing ring in the disc assembly. Fire safe construction.

RTC-22

Seat surface integral with the body and metal sealing ring in the disc assembly.

RTC-11

Metal-graphite laminated sealing ring in the body and seat surface in the disc. Fire safe construction.

RTC-02

Metal sealing ring in the body and seat surface in the disc.

Sizes

From 3 to 36 in. Bigger sizes on request.

Pressure-Temperature Rating

ANSI B16.34 Classes 150 to 600. Higher Classes on request.

Body Types

Wafer, double flanged or lug.

Face-to-Face Dimension

According to API 609 table 2 for wafer type. ISO 5752 or ANSI B16.10 (gate valve) for flanged construction. See table 3.

Materials

Types RTC-21 and RTC-22 - Carbon steel or stainless steel body with Stellite seat. Nickel plated carbon steel or stainless steel disc with laminated stainless-graphite (RTC-21) or solid stainless steel (RTC-22) seal ring.

Types RTC-11 and RTC-02 - Carbon steel or stainless steel body with laminated stainless-graphite (RTC-11) or solid stainless steel (RTC-02) seal ring. Carbon steel or stainless steel disc; hard chrome plated or Stellite hard faced disc edge on request.

Special materials are available on request.

Flow Characteristic and Cv

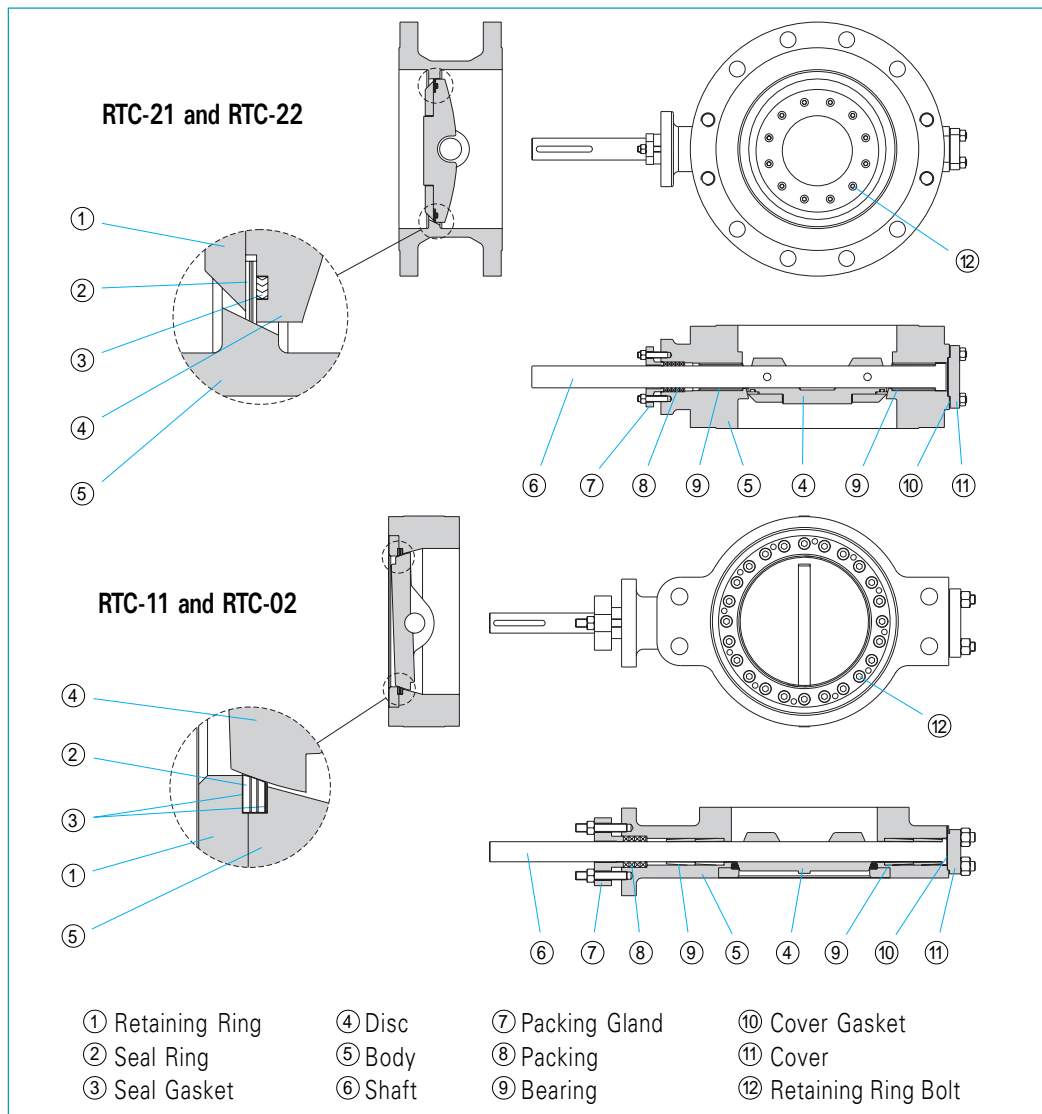
Modified equal percentage, inherent. See tables 1 and 2.

Shutoff Classifications and Temperature Limit

RTC-22 and RTC-02 - Class IV or V according to ANSI/FCI 70-2, for temperatures up to 600°C.

RTC-21 and RTC-11 - Tight shutoff, for temperatures up to 500°C.

Main parts identification



BODY SIZE (in.)	OPENING ANGLE								
	10°	20°	30°	40°	50°	60°	70°	80°	90°
3	4	15	27	43	61	84	110	136	153
4	9	31	57	88	126	174	227	281	316
6	27	91	164	256	365	502	658	813	914
8	59	198	356	554	792	1089	1425	1762	1980
10	94	314	565	879	1256	1727	2260	2794	3140
12	144	481	865	1346	1924	2645	3463	4281	4810
14	199	665	1197	1862	2660	3657	4788	5918	6650
16	264	881	1585	2466	3524	4845	6343	7840	8810
18	339	1130	2034	3164	4520	6215	8136	10057	11300
20	435	1450	2610	4060	5800	7975	10440	12905	14500
24	645	2150	3870	6020	8600	11825	15480	19135	21500
28	906	3020	5436	8456	12080	16610	21744	26878	30200
30	1317	3630	6534	10164	14520	19965	26136	32307	36300
32	1263	4210	7578	11788	16840	23155	30312	37469	42100
36	1608	5360	9648	15008	21440	29480	38592	47704	53600

Table 1
Flow coefficient - Cv
ANSI class 150

BODY SIZE (in.)	OPENING ANGLE								
	10°	20°	30°	40°	50°	60°	70°	80°	90°
3	4	15	27	43	61	84	110	136	153
4	7	24	44	69	99	136	178	220	248
6	20	68	123	191	273	376	492	608	684
8	37	124	223	347	496	682	892	1103	1240
10	58	194	349	543	776	1067	1396	1726	1940
12	87	290	522	812	1160	1595	2088	2581	2900
14	120	400	720	1120	1600	2200	2880	3560	4000
16	160	535	963	1498	2140	2942	3852	4761	5350
18	217	723	1301	2024	2892	3976	5205	6434	7230
20	272	907	1632	2539	3628	4988	6530	8072	9070
24	396	1320	2376	3696	5280	7260	9504	11748	13200
28	579	1930	3474	5404	7720	10615	13896	17177	19300
30	678	2260	4068	6328	9040	12430	16272	20114	22600
32	801	2670	4806	7476	10680	14685	19224	23763	26700
36	1101	3670	6606	10276	14680	20185	26424	32663	36700

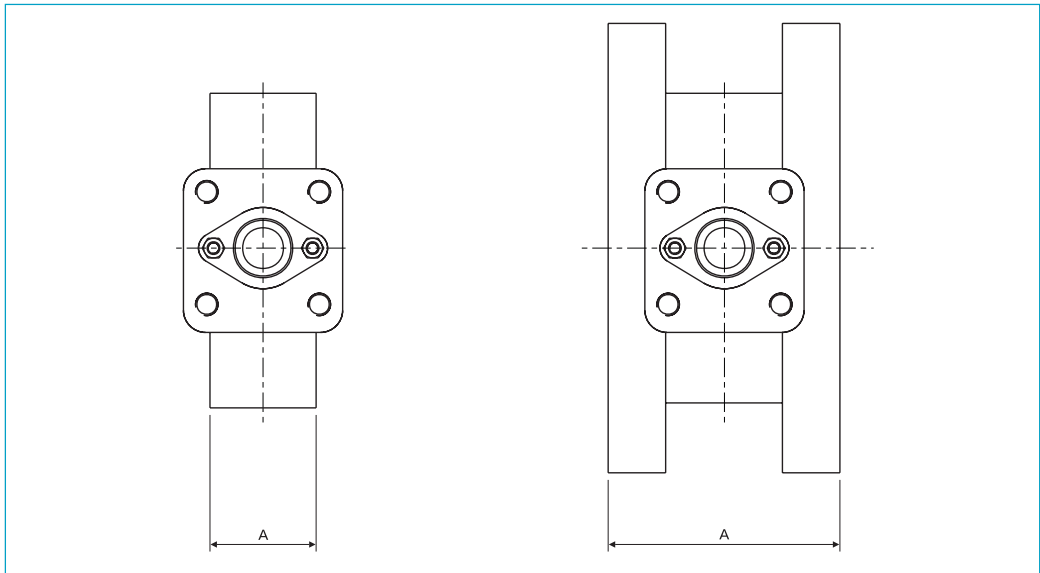
Table 2
Flow coefficient - Cv
ANSI class 300
and 600

Can be supplied with spring return or double action pneumatic actuator, gearbox for

manual operation, electric or hydraulic actuator.

Actuators

Table 3
Face-to-face
dimensions



NOVO STUDIO PROPRAG

BODY SIZE (in.)	WAFER			FLANGED			
	API 609 Table 2			ISO 5752		ANSI B16.10 (GATE)	
	Class 150	Class 300	Class 600	Class 150 and 300	Class 600	Class 150	Class 300
3	48	48	54	114	180	203	282
4	54	54	64	127	190	229	305
6	57	59	78	140	210	267	403
8	64	73	102	152	230	292	419
10	71	83	117	165	250	330	457
12	81	92	140	178	270	356	502
14	92	117	155	190	290	381	762
16	102	133	178	216	310	406	838
18	114	149	200	222	330	432	914
20	127	159	216	229	350	457	991
24	154	181	232	267	390	508	1143
28	229	229	-	292	-	610	1346
30	241	241	-	318	-	610	1397
32	241	241	-	318	-	660	-
36	241	241	-	330	-	711	-

Ordering
information

1. Valve size and type
2. End connection style
3. Body material
4. Trim material
5. Maximum working condition
6. Normal working condition
7. Minimum working condition
8. Maximum shutoff pressure
9. Unidirectional or bidirectional shutoff
10. Specific gravity
11. Specific heat ratio
12. Critical pressure
13. Critical temperature
14. Viscosity
15. Inlet and outlet pipe diameter and thickness



HITER IND. E COM. CONTR. TERMO-HIDR. LTDA.
Rua Capitão Francisco Teixeira Nogueira, 233
CEP 05037-030 - Água Branca - São Paulo - Brasil
Phone.: +55 11 3611.0788
Fax: +55 11 3611.0921/3611.1711
e-mail: vendas@hiter.com.br - www.hiter.com.br

Representative

Bulletin 1183 / Rev. January 2001