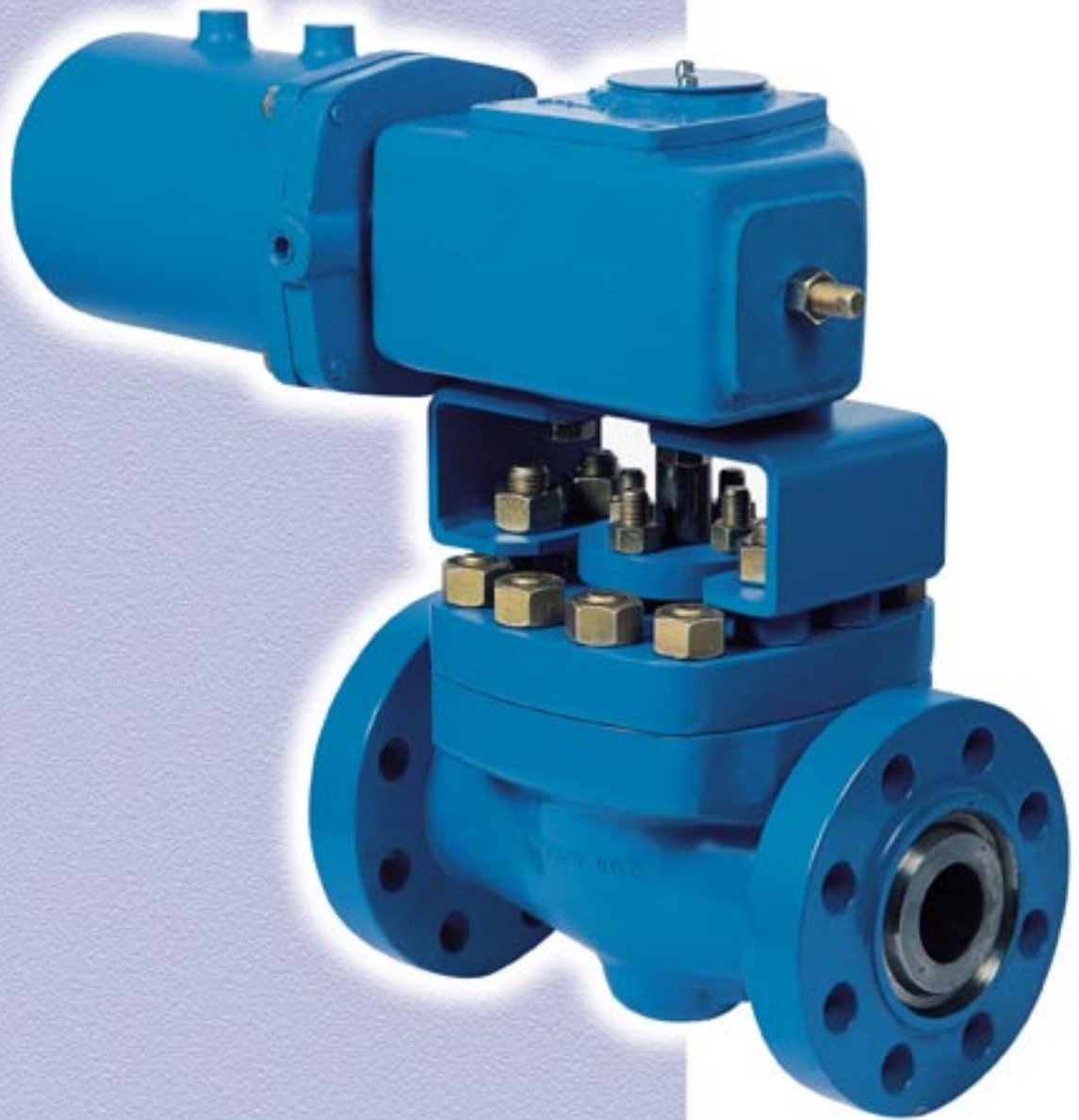




TE SERIES BALL VALVE



Features

Characteristic

Ball valve with integral body construction to meet high pressure applications, top entry and trunnion supported ball.
Double block and bleed.

Pressure-Temperature Rating and Sizes

ANSI B16.34 classes 900 or 1500, sizes from 2 to 20 in. and class 2500, from 2 to 12 in.
Other sizes can be supplied upon request.

End Connections

FR - Raised Face
FF - Flat Face
RTJ - Ring type joint
Other flange facings can be supplied upon request.

Body Materials

ASTM A 216 Gr. WCB carbon steel,
ASTM A 351 Gr. CF8 stainless steel, or
ASTM A 351 GR. CF8M stainless steel.
Other materials are available on application.

Ball and Seat Material

Hard chrome plated carbon steel ball (size 6 in. and up) or stainless steel ball. High Performance Thermoplastic seat for tight shutoff and temperatures up to 200°C (392°F).
Fire safe construction with resilient primary seat and stainless steel secondary seat.
Hardened stainless steel ball and Stellite coated stainless steel seat for high

temperature applications or applications with fluids containing suspension solids.

Other combinations or materials are available on application.

Packing Materials

Braided PTFE or asbestos⁽¹⁾ with PTFE, for general purpose use. Graphite, for high temperature or fire safe construction.
Other materials are available on application.

(1) Used only in case of no restrictions to asbestos.

Flow Characteristic

Equal percentage (inherent).

Flow Coefficient - Cv

See tables.

Shutoff Classifications

According to API specification 6D or MSS-SP-72 standard. Optional: ANSI/FCI 70-2 Class VI for soft seats, Class IV or V for metal seats.

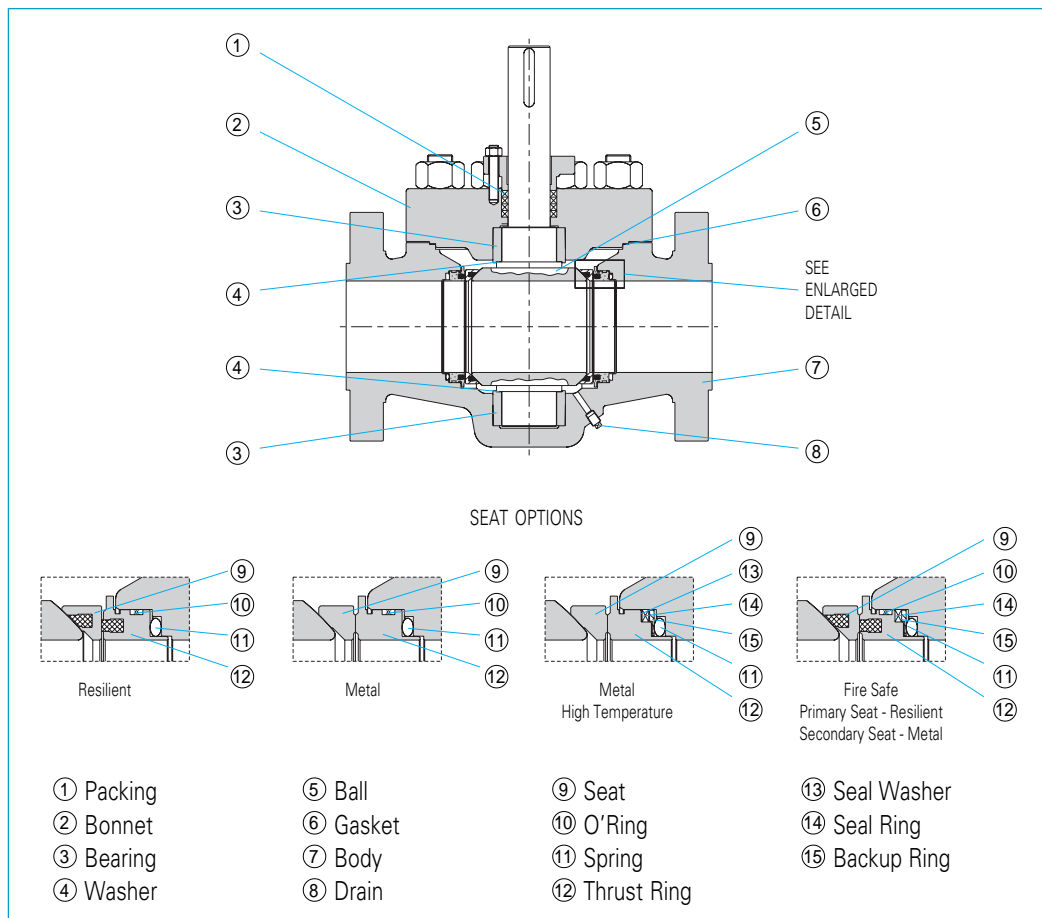
Face to Face Dimension

According ANSI B16.10 (long type) and API 6D.

Special Constructions

Scraping metal seat for descaling the ball surface, steam jacketed body, sealant injection, by-pass, extended actuator bracket for high temperature applications and extended bonnet for low temperature applications

Main parts identification

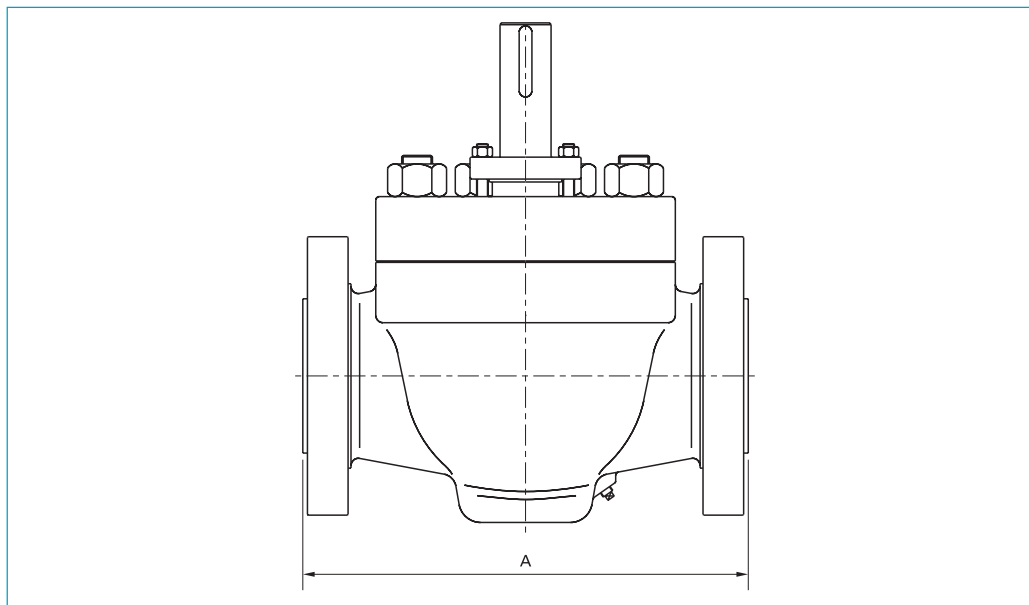


BODY SIZE (in.)	OPENING ANGLE											
	15	20	30	40	50	60	65	70	75	80	85	90
2	-	1.3	4,9	12	23	40	58	84	118	183	297	465
3	1.4	5	17	36	65	106	147	211	294	444	719	1100
4	2.5	8.8	30	64	115	191	277	403	563	848	1373	2100
6	12	29	84	169	291	502	728	1060	1480	2190	3520	5300
8	30	65	165	315	531	946	1360	1970	2760	4000	6400	9500
10	55	113	272	513	861	1560	2230	3240	4540	6520	10460	15500
12	77	159	383	720	1210	2220	3230	4680	6560	9420	15110	22400
14	99	201	461	852	1420	2650	3810	5520	7730	11020	17650	26000
16	131	263	603	1110	1860	3490	5060	7320	10260	14620	23410	34500
18	149	309	744	1400	2350	4360	6400	9300	13030	18720	30030	44500
20	239	450	992	1810	2880	5690	8190	11740	16450	23250	37200	54500

Flow coefficient - Cv
ANSI class 900

BODY SIZE (in.)	OPENING ANGLE											
	15	20	30	40	50	60	65	70	75	80	85	90
2	-	1.3	4,9	12	23	40	58	84	118	183	297	465
3	1.4	5	17	36	65	106	147	211	294	444	719	1100
4	2.5	8.8	30	64	115	191	277	403	563	848	1373	2100
6	11	27	78	156	269	464	673	980	1370	2030	3250	4900
8	27	59	149	285	481	856	1230	1790	2500	3620	5790	8600
10	49	102	246	463	777	1410	2020	2930	4100	5890	9450	14000
12	69	142	342	642	1080	1980	2880	4180	5860	8410	13500	20000
14	95	193	443	819	1370	2550	3670	5300	7440	10590	16970	25000
16	123	248	568	1050	1750	3290	4770	6900	9670	13770	22060	32500
18	139	288	694	1300	2190	4070	5970	8670	12150	17450	28000	41500
20	230	434	956	1750	2780	5480	7890	11300	15850	22400	35830	52500

Flow coefficient - Cv
ANSI class 1500



Face-to-face
dimension

Face-to-face
dimension

BODY SIZE (in.)	A (mm)					
	RAISED FACE			RTJ		
	ANSI CLASS					
	900	1500	2500	900	1500	2500
2	368	368	451	371	371	454
3	381	470	578	384	473	584
4	457	546	673	460	549	683
6	610	705	914	613	711	927
8	734	832	1022	740	842	1038
10	838	991	1270	841	1000	1292
12	965	1130	1422	968	1146	1445
14	1029	1257	-	1038	1276	-
16	1130	1384	-	1140	1407	-
18	1219	1537	-	1232	1559	-
20	1321	1664	-	1334	1786	-

Actuators

The **TE Series** ball valve is normally operated by double action or spring return pneumatic piston actuators (AP series).

Can also be supplied with electric actuator, hydraulic actuator or manual gear operator. Detailed information about actuators are given in specific bulletins.

Ordering
information

1. Valve size
2. End connection style
3. Body material
4. Trim material
5. Packing material
6. Maximum working condition
7. Normal working condition
8. Minimum working condition
9. Shutoff differential pressure
10. Specific gravity
11. Specific heat ratio
12. Critical pressure
13. Critical temperature
14. Viscosity
15. Inlet and outlet pipe diameter and thickness.



HITER IND. E COM. CONTR. TERMO-HIDR. LTDA.
Rua Capitão Francisco Teixeira Nogueira, 233
CEP 05037-030 - Água Branca - São Paulo - Brasil
Phone.: +55 11 3611.0788
Fax: +55 11 3611.0921/3611.1711
e-mail: vendas@hiter.com.br - www.hiter.com.br

Representative

Bulletin 1174 / Rev. July 2000